



# INDOFINE Chemical Company, Inc.

121 Stryker Lane, Bldg. 30, Suite 1 • Hillsborough, NJ 08844 • U.S.A.

Phone: (908) 359-6778 • FAX: (908) 359-1179

website: [www.indofinechemical.com](http://www.indofinechemical.com)

e-mail: [chemical@indofinechemical.com](mailto:chemical@indofinechemical.com)

## CERTIFICATE OF ANALYSIS

Catalog Number: NR-005

Product Name: **6-GINGEROL**

CAS Number: [23513-14-6]

Lot No.: 2311871

Molecular Formula: C<sub>17</sub>H<sub>26</sub>O<sub>4</sub>

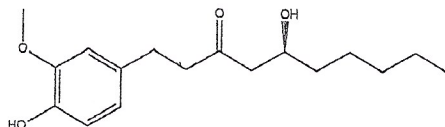
Molecular Weight: 294.4

Appearance: White solid

Water Content: <0.1%

Storage: Store at -20°C

Purity(HPLC): 98.0%



Prepared by:

*Ramesh Mandadi*

Ramesh Mandadi

Director of Operations

Reviewed and Approved by:

*Sujata Moton*

Sujata Moton

VP

# **INDOFINE Chemical Company, Inc.**

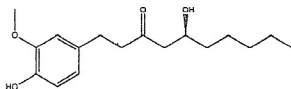
121 Stryker Lane, Bldg. 30, Suite 1 • Hillsborough, NJ 08844 • U.S.A.

Phone: (908) 359-6778 • FAX: (908) 359-1179

website: [www.indofinechemical.com](http://www.indofinechemical.com)

e-mail: [chemical@indofinechemical.com](mailto:chemical@indofinechemical.com)

## HPLC ANALYSIS



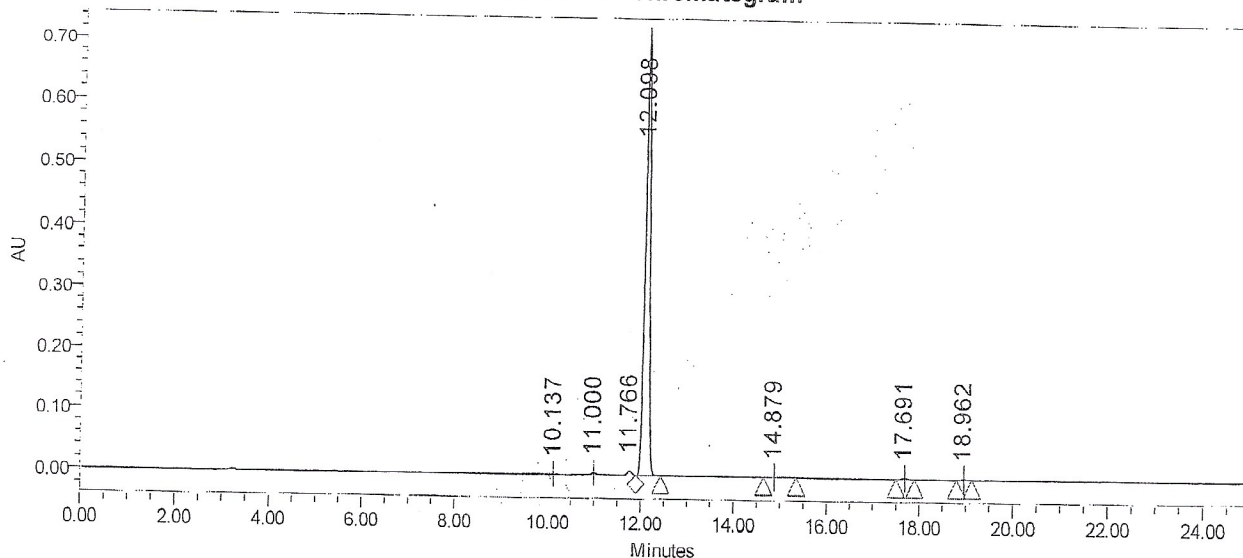
Catalog No.: NR-005  
Product Name: 6-Gingerol  
Lot No.: 2311871

### SAMPLE INFORMATION

Sample Name: 6 Gingerol  
Sample Type: Unknown  
Vial: 52  
Injection #: 1  
Injection Volume: 5.00 ul  
Run Time: 25.0 Minutes

Acquired By:  
Sample Set Name  
Acq. Method Set: 6 Gingerol  
Processing Method: samples  
Channel Name: PDA Ch1 280nm@4.8nm  
Proc. Chnl. Descr.: PDA Ch1 280nm@4.8nm

### Auto-Scaled Chromatogram



### Peak Results

	Name	RT	Area	% Area	Height (µV)	USP Plate Count	USP Resolution
1		10.137	3928	0.08	603	56726.99	
2		11.000	20714	0.42	3125	63908.74	4.85
3		11.766	47028	0.95	6962	68097.93	4.25
4		12.098	4871773	98.01	708914	70713.53	1.81
5		14.879	6493	0.13	345	67024.89	13.66
6		17.691	13117	0.26	1746	127808.62	13.30
7		18.962	7728	0.16	1045	153300.52	6.34

Prepared by:

*Ramesh Mandadi*

Ramesh Mandadi

Director of Operations

Reviewed and Approved by:

*Sujata Moton*

Sujata Moton

VP